



# Connected Magazine

**Issue 2 Spring 2025**



**Woodlands Methodist Church**  
**Wetherby Road, Harrogate, HG2 7SG**



# Staying in Touch

**The Minister is the Rev Ian Bryon.**

**Contact phone number is: 01423 819663**

There are lots of ways to keep in touch with Woodlands Methodist Church:

**Weekly Notices:** these can be picked up at church on a Sunday morning or emailed directly to you. Please contact the editors on [peter.linda@theinvernet.co.uk](mailto:peter.linda@theinvernet.co.uk) to have your email address added to the Circulation List.

**Website:** <https://woodlandsmethodist.church>

**Facebook page:** [www.facebook.com](http://www.facebook.com) and search for Woodlands Methodist Church Harrogate. Don't forget to Like our page and stay up to date with our events. We also share posts from the Circuit, the Methodist Church and other chapels in the area.

Woodlands Methodist Church is one of 13 chapels in the Nidd Valley Circuit. Find out more by visiting:

**Nidd Valley Circuit website:** [www.niddvalleymethodist.org.uk](http://www.niddvalleymethodist.org.uk)

**Circuit Facebook page:** [www.facebook.com](http://www.facebook.com) and search for Nidd Valley Methodist Circuit. Like the page and stay up to date with what's happening.

The Nidd Valley Circuit is part of the Yorkshire North & East Methodist District. Stay up to date by visiting:

**District website:** [www.yorkshirenemethodist.org](http://www.yorkshirenemethodist.org)

**District Facebook page:** [www.facebook.com](http://www.facebook.com) and search for Yorkshire North and East Methodist District.



# Weekly Church Calendar

## **Sunday**

9am 1<sup>st</sup> Sunday of the month Holy Communion followed by breakfast unless stated otherwise.

10.30am Morning Worship & Sunday School (2<sup>nd</sup> and 3<sup>rd</sup> Sundays) followed by coffee & fellowship.

6.30pm Monthly Evening Worship on 3<sup>rd</sup> Sunday of the month followed by coffee & fellowship.

## **Monday**

WoW group as per programme

## **Wednesday**

9am Garden Gang in the Community Garden

7pm Ladies Circle fortnightly as per programme

## **Thursday**

10am Thursday morning House Group fortnightly

10am Craft Club fortnightly

## **Friday**

8.45am Toast Community Café in term time

12.15pm Lunch Club in term time

## **Saturday**

8.30am MoW Men's breakfast on 3<sup>rd</sup> Saturday.



# Editorial

Thank you for the very positive reaction to the first Reconnected magazine, it is good to have your support 😊

The title is not yet finalised, latest suggestion has been *Connecting*. Have you any thoughts to share?

Aided by the master copy held by Rev Ian, the printing team took just over an hour to run off 145 copies, some of which were in the hands of Lunch Club members barely two hours later!

Thank you to all who have contributed to our Spring and Easter issue. The beautiful photo on the cover comes courtesy of the Bucktrouts' photo collection.

You will find details of the various Lent courses and our Easter services inside.

Articles for inclusion are very welcome particularly updates from groups that meet on and off the premises, also any photos you have taken that would make a good front cover.

The magazine will be available as a printed copy and electronic version if you would prefer to read it on your own device.

How to contribute to the next issue:

- Summer themed cover photo needed: have you a suitable one in your collection you could share?
- Do you like the current title of Reconnected? Can you suggest something better?
- Good News: anything uplifting to share? Special anniversaries and birthdays?
- Group news: what has your group got planned in their programme?
- Memories of Harrogate chapels: have you anything on Grove Road, Hampsthwaite or Oatlands to share?
- The deadline for contributions for issue 3 is Sunday 18<sup>th</sup> May.

Thank you for reading!



## From our Minister

Dear Friends,

As I write this letter tumultuous events are threatening to change the world order as we have known it for the last 80 years. The new administration in the United States is turning established diplomacy on its head, appearing to be willing to appease Russia and even potentially reward them for invading Ukraine three years ago. At the same time, it is looking to retreat from the world, reducing the amount of aid it gives to other countries and causes. In the recent German elections over one in five of the electorate have voted for the far right AfD party, mirroring swings to the right in France, Italy, the Netherlands and France to name but a few. The ceasefire in Israel-Palestine is fragile with each side accusing the other of breaching the terms of the agreement and the US has proposed taking over Gaza to create a holiday resort. Here in the UK the Government has announced a reduction in the UK aid budget to allow for an increase in defence spending and we are continuing to see increases in the cost of living.

As I watch, read or listen about these events, I wonder what is next for the world. How will this impact vulnerable people wherever they are? What does it mean for those simply seeking a better life for themselves and their families? Who will fill the vacuum left by the US's withdrawal from its role as leader of the free world?

It can feel like we are living in dark times.

During Lent we are following, in small groups, a Bible study course produced by Embrace the Middle East. A charity that, for over 170 years, has partnered with some of the oldest Christian communities in the world, showing love and care to those who need it most. The study is called "*Hope in Hard Places*," reflecting Embrace's response to the question "Where is God in all of this?" As we reflect, explore scripture, and pray together, we will discover stories from the Middle East that show the ongoing work of God in this deeply troubled part of the world. (If you haven't already joined one of the groups there is still time, just let one of the stewards, or me know.) The prayer is that we will find





encouragement and strength in stories of hope – showing us that, no matter how dark the times we live in are, God is with us.

Lent is a time when we reflect on Jesus' time in the wilderness, preparing for his ministry. It culminates in Holy Week where we remember how Jesus was betrayed, suffered and died for us all. Good Friday was the darkest of times for him and his followers. It seemed that their hopes and dreams were shattered with his death on the cross.

It may feel like Friday to us, it may feel that there is little hope, but the story doesn't end on Good Friday, because Sunday is coming. Just as winter is starting to give way to spring and the crocuses and snowdrops on the Stray are bursting into bloom, there is hope. Hope and healing for the world rises on Easter Sunday. Hope and healing for the darkest of times. Jesus is alive, he is risen and in and through him we are offered life and life in all its fulness. We are a resurrection people; Sunday has already come.

So do not despair, hold on to the hope we have in Jesus. Trust in him for he is with us, whatever the world throws at us. Whatever our situation or circumstances. In joy and sorrow, the best of all is, that Jesus is with us, always.

God bless and happy Easter,

FOR  
GOD  
SO  
LOVED THE WORLD  
HE  
GAVE  
HIS  
ONLY  
SON



# Welcome Spring!

The days are getting a little longer and we are heading into the time of the clocks changing to 'spring forward' at the end of March. It is good to see the signs of spring in the world around us as bulbs push through their shoots which turn into those familiar flowers of snowdrops, daffodils and crocus.

In the church calendar we venture into the time of Lent from Ash Wednesday on 5<sup>th</sup> March which will be marked with a Circuit service at Woodlands at 7pm.

## Have you signed up for the Lent Course, *Hope in Hard Places*?



This year's materials come from Embrace which partners with Christians in the Middle East and you can join one of three groups:

- Monday evenings, 7.30pm to 9pm at church in the Vestry
- Tuesday afternoons, 2pm at church
- Thursday mornings, 10am to 11.30am at the home of Neil and Sue Ross.

Please get involved and allow your faith to grow in a friendly and welcoming environment. No need to book ahead, just come along. Materials are provided, also tea and coffee!



## **Other options within the Circuit for Lent**



**Gracious Street** launch *Soul Food* with a Circuit service on Sunday 9<sup>th</sup> March at 6.30pm. *Soul Food* is the Methodist Church's theme for Lent and this will be explored each Tuesday at 2pm in various churches round the Circuit. As Deacon Gary says: *"Our Aims will be praying for the Community, learn new things about the community and pray for those, pray for Resurrected Bites, the Police, Education, our Politicians, and Hospital. Hear from key people about what is happening, and their prayer needs."*

Dates:

- 10/3/24 @ Bilton Area: Soul Food: All the things that nourish us
- 17/03/24 @ Starbeck: Soul Shelter: Nourished by a safe home for everyone.
- 24/03/24 @ Bilton Area: Soul Rest: Nourished by patience and slowness
- 31/03/24 @ Starbeck: Soul Repair: Nourished by unconditional love and forgiveness
- 07/04/24 @ Bilton Area: Soul Mates: Nourished by companionship

### **All sessions start at 2pm**

**Trinity** will be running *The Road Goes Ever On*, a series of five studies looking at Exodus, the gospel of Mark and the story of *The Lord of the Rings* (Tolkien)

The venue is the Batchelor Room at Trinity starting Monday 10<sup>th</sup> March either at 1.30pm or 7.30pm. No previous knowledge of Tolkien required!





# Reflection for Easter

A man, despised and laughed to scorn,  
insulted, whipped, brought low,  
denied and, on the cross, bereft -  
what was the crime, the fault, the threat,  
that he should suffer so?

The arms pinned wide; will nails now tame  
this different, dangerous thought?  
The soldiers' dice. The public shame.  
The shuddering breaths. The pain-racked frame.  
A trouble-maker caught?

A trouble-maker? No – the one,  
through worldly fail and fall  
and fears of God-forsakenness,  
revealing power in powerlessness -  
God's foolish gift to all.

Misunderstood by those who seek  
security and fame,  
God hangs, arms open to the world,  
embracing life - not yet unfurled  
by those who claim his name.

© Andrew Brown – February 2004

Possible tune – Newcastle



## Creative Prayer

At Woodlands we use various ways to pray creatively, most recently we have held stones in silent prayer then released them into water and contributed to a Prayer Mountain passed round with pens during a service.

### Using a Prayer Labyrinth

Prayer labyrinths are another method of Creative Prayer and the Wydale Centre locally and Norwich Cathedral are two places with permanent labyrinths in their grounds that you walk. Rev Leonora Wassell creates small fabric prayer labyrinth you can trace with your finger.



Read on for Creative Prayer using the Labyrinth pictured above:



### **First Movement: Releasing (Confession)**

Place your finger at the opening of the labyrinth. Pray silently or aloud a prayer of confession. When finished, slowly move your finger forward along the labyrinth. Move at your own pace toward the centre. Let the words of the prayer stay with you.

Quiet your mind as you move through the labyrinth. Make room for emotions and stirrings that arise. What needs to be changed, forgiven, cleared, confronted, or healed in your life? Offer these situations to God as you move forward.

### **Second Movement: Receiving (Centring)**

When you reach the centre, rest your finger there for a moment before you read a scripture reading for the day. (Use the lectionary from the Methodist Prayer Handbook, your own Bible reading notes or just dip in)

When you are ready, read the passage slowly, as if you have never read it before. Centre on God's Word and be open to what God reveals to you through the reading. Return your finger to the centre of the labyrinth and reflect on the passage and what it holds for you.

### **Third Movement: Returning (Intercession)**

As you prepare to leave the labyrinth, place your finger at the same opening in the centre where you entered. Now lift up your intercessory prayers for the day and when finished, begin to move your finger back along the same path on which you entered. Let the intercessory prayers stay with you, and add to them as you make the turns and move along the pattern back out of the labyrinth. Be mindful of people and circumstances in the world that are in need of your prayers. Hold each one in your heart for a part of the journey outward.

### **When You Have Finished**

As you lift your finger from the labyrinth's end, offer thanks to God.

Adapted from the book [\*The Awkward Season: Prayers for Lent\*](#) by Pamela C. Hawkins, pgs. 111–112. Copyright © 2009 by Upper Room Books. Used with permission.



## Easter at Woodlands

**Wednesday 6<sup>th</sup> March @ 7pm:** Circuit service for Ash Wednesday

**Sunday 13<sup>th</sup> April @ 10.30am:** Palm Sunday service

**Thursday 17<sup>th</sup> April @ 6.30pm:** Maundy Thursday service with symbolic meal and hand washing. Rev Ian Bryon.

**Netmakers Good Friday service at the Cenotaph in town at 11am.** Join Christians from other churches as we gather for a half hour open air service of witness to the local community and visitors. Fresh hot cross buns distributed to attendees also!

**Friday 18<sup>th</sup> April @ 7.30pm:** Tenebrae service for Good Friday with Rev Ian Bryon.

**Sunday 20<sup>th</sup> April: Easter Day**

- **8am** Early outdoor (weather dependent!) service followed by breakfast. Rev Ian Bryon.
- **10am** Easter Day Communion service with activities for Sunday Club in the vestibule area. Note different start time, this will allow you to segue from the early service to breakfast then to Communion service. You can also have breakfast before the 10am service. Rev Anne Brown.

## Easter Garden Prayer Trail

During Holy Week there will be an Easter Trail of painted story stones, prayer points and children's Easter story pictures in the Community Garden. Come along in your own time to walk your way round the trail, feel free to bring a drink and a snack when you take a rest in the seating areas. Children who follow the trail will be led to find a small foiled chocolate egg to take away at the end. Besides the Easter trail you can enjoy the peace of the garden, see what Spring flowers are sprouting and hear the bird song.

Join us on Saturday 12<sup>th</sup> April between 10.00am-12.00 and enjoy refreshments from the middle hall after going around the trail.





## Reflection

Some years ago, while living in Norfolk, I was busy one day preparing a sermon, and I must have nodded off (!)

A voice shouting woke me up!

The noise came from the garden of the bungalow next door, I looked out of the window and was surprised to see a mobile crane in their front garden! It was dangling an enormous length of a metal beam. As I watched, this huge beam was being hauled carefully over the roof of the bungalow to the back garden. It was to rest on the building work done down there – as part of creating a 2<sup>nd</sup> storey extension – making the bungalow into a house.

The man guiding the metal beam couldn't see over the roof of the bungalow to see where the beam was going. There was a man in the back garden shouting instructions – because he couldn't see over the roof either! Each man depended on the other to get this colossal beam into place. They trusted each other completely.

I am reminded of a line in the hymn: *What a Friend we have in Jesus*, “can we find a friend so faithful?”

Rev David Bucktrout







## Celebrations!

The people of Woodlands have celebrated a few special birthdays and anniversaries in the last few months. It would be lovely to share your special celebrations with the church family.

Two of our ladies have notched up another year in their journey through the 90s decade. We wish them continued good health!

This month we send our Golden Wedding congratulations to Peter and Rev Linda Phillips who celebrate their special anniversary on Saturday 15<sup>th</sup> March. Thank you to them both for sharing this lovely wedding photo from 1975.





## Recipe Corner

This month the Lunch Club chefs share one of their scrummy desserts which is also easy to make and gluten free! Something for the dads and kids to try for Mother's Day?

### Meringue with Fruit Compote and Cream



#### Ingredients

- Ready-made meringue nests or make your own meringue using the recipe below
- Soft fruit – could be cooled stewed rhubarb, raspberries or mixed berries (fresh or defrosted) – add sugar to taste
- Squirty cream or whipped cream
- Passion fruit or the juice from the defrosted berries

#### Method

1. Extract juice and flesh from passion fruits, and sieve to remove seeds
2. Place meringue nest on plate
3. Add compote of soft fruit
4. Add cream and drizzle with passion or fruit juice and serve immediately.

#### Should you wish to make your own meringues:

##### Ingredients

- 2 egg whites
- pinch of cream of tartar
- 150g (5oz) castor sugar
- 1 level teaspoon cornflour
- ½ teaspoon of vanilla essence



## Method

1. Prepare baking trays covering with double thickness greaseproof paper (do not grease)
2. Set oven to 110C or 225F or gas ¼
3. Put egg whites into a clean dry bowl, add cream of tartar beat until very stiff – 5 to 7 minutes with an electric whisk.
4. Add 1/3 sugar and beat until stiffer than before and mixture forms tall firm peaks.
5. Add next 1/3 sugar and beat in gently.
6. Using a metal spoon fold in the remaining sugar with cornflour and vanilla essence.
7. Spoon or pipe into nest shapes on prepared trays and bake for 1.5 hours.
8. Switch off heat and leave in oven until completely cool – at least another hour. Carefully peel away from paper.

Don't forget to write a review for the next magazine!





## Junior Mission for All



Sunday Club members are having a fundraiser for Easter time. Nicola and Violet have been busy knitting chicks ready for crème eggs to be put inside. These little crème egg chicks will be on sale at coffee time for £2.50 each with all proceeds going to JMA. Why not buy some of our chicks to give to family and friends for Easter? You can request different chick colours besides the ones we have already used, please speak to Nicola if you want to request a special colour, even stripes for a football fan! Donations of crème eggs to fill the chicks are also very welcome! Please pass any egg donations onto Nicola or one of the stewards.

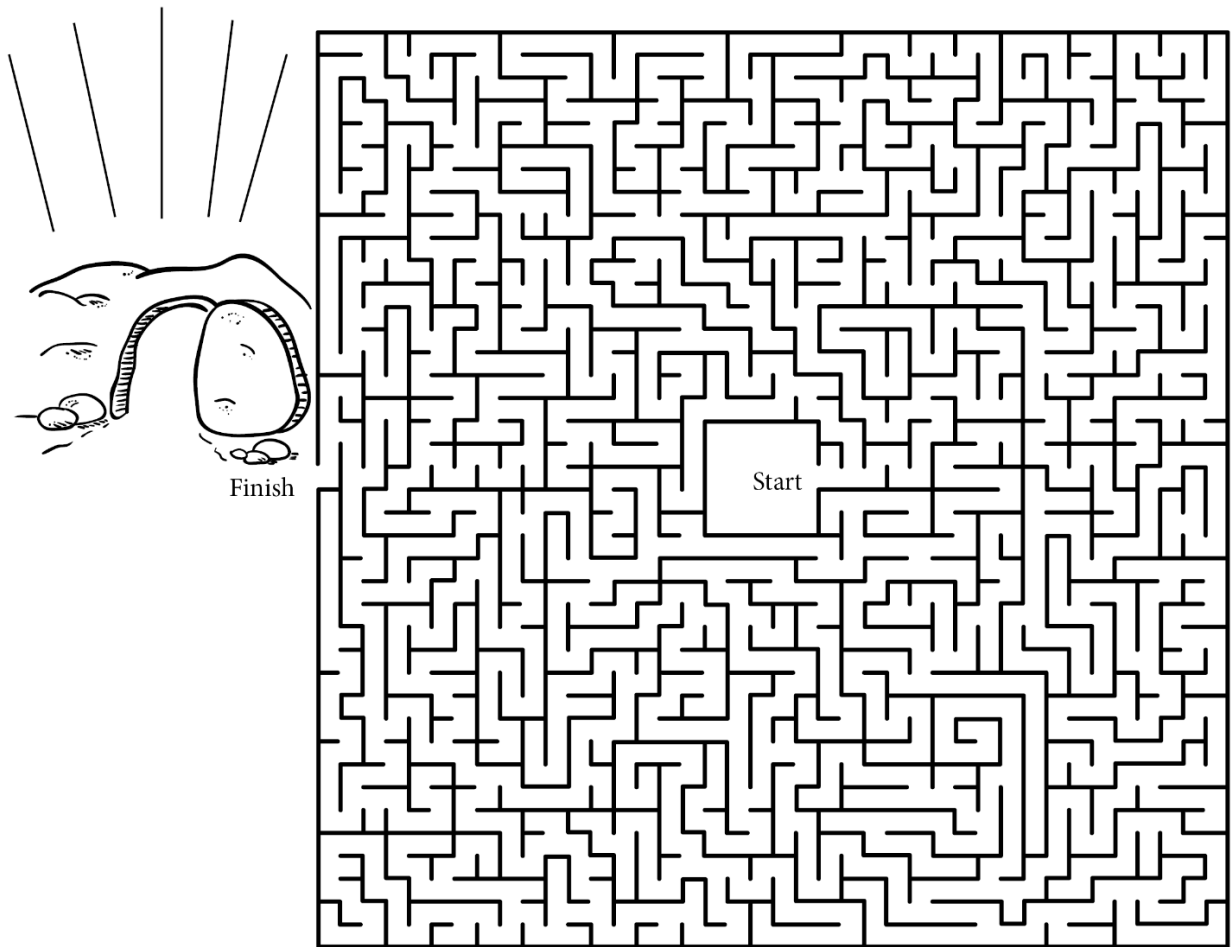
## Lent Mystery Knitalong!

Keen knitters within the Methodist Church have been participating in the Lent Mystery Knitalong devised by members of Victoria Methodist in Bristol who also do similar for Advent. This year's Lent knitalong is up and running with the pattern complete with reflections available in regular or large print. The reflections can also be viewed separately if you don't knit. Those who participate will have a daily reflection then knit the set number of rows for that day, normally about 4. If you start late it is easy to catch up. Please speak to Nicola if you would like a copy of the pattern.



# Easter Maze

Help the disciples get to the empty tomb!



**Bonus! Read these Bible verses in your Bible.**

- ☐ Mark 16:1-20   ☐ John 3:16   ☐ John 11:25-26   ☐ Romans 3:22-23   ☐ 1 Corinthians 15:3-8  
☐ Romans 6:8-14   ☐ Romans 9:22



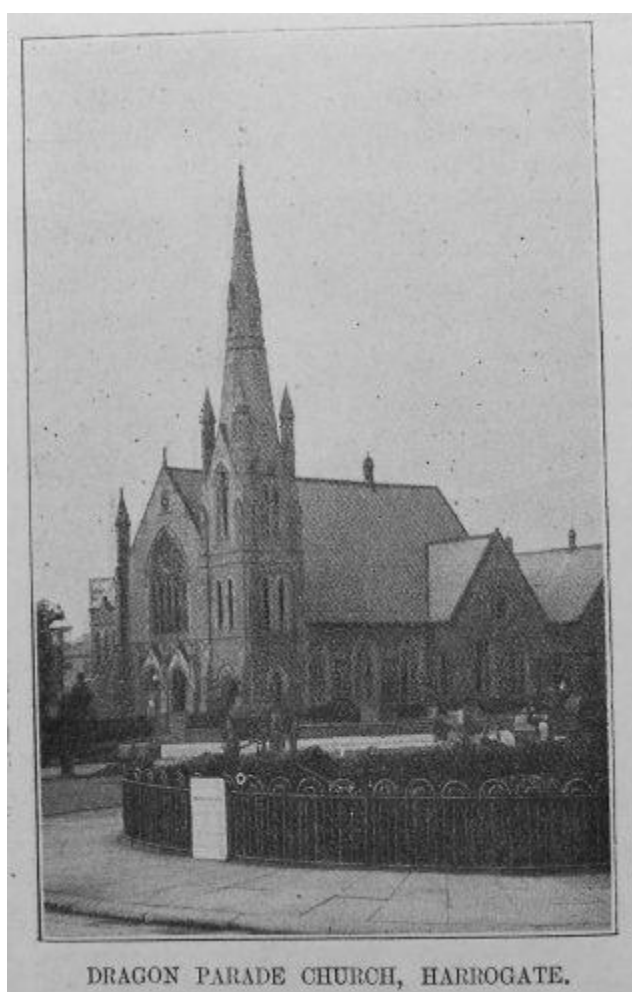


# Harrogate Methodist Memories

This series will explore Methodist churches in the District from the past. The Nidd Valley Circuit which encompasses Harrogate and Knaresborough is now made up of thirteen chapels but there is a rich history of many other chapels that are no more.

We are starting with Dragon Parade Methodist Church which was home to some of our older members before Woodlands was built.

## Dragon Parade Methodist Church



The Church was situated on the corner of Dragon Parade on the opposite side to Dragon Parade health clinic and was officially opened in September 1900 with the first Minister being Rev. G.F. Fawcett. The Church congregation included four former Mayors of Harrogate. The Harrogate Herald dated 19<sup>th</sup> July 1967 describes the building as:

*"...spacious with large partly stained windows, a splendid looking organ, soft blue carpeting and shiny well-kept pews to seat 550 people."*

An article in the *Harrogate Methodist Circuit Bulletin* dated Autumn 1967 featured recollections from Rev Alfred L. Wigley who recalled *"the balcony across the back, the broad transepts, the choir within the Communion table area, the central pulpit, the fine organ.."* Rev Wigley had been Minister when the Golden Jubilee was celebrated in 1950. He recalled that Dragon Parade had

been: *"one of our leading Churches....having for its ministers men of outstanding reputation..."*



A Mr Annakin recalled the moved from Mount Parade to Dragon Parade. He was part of the committee choosing a new site for the new Church and its buildings. There was a Chapel on the corner of Mount Parade that became the Empire Theatre and latterly restaurant premises.

Dragon Parade Church was also an important supporter of the Primitive Methodist Orphan Home at Pannal Ash which then became part of the National Children's Home. The Home's stained glass window is now in the Pump Room Museum. Rev Wigley recalls the '*Sisters and the children*' attending worship, Sunday School and the uniformed organisations. Younger employees were also in the Young People's Fellowship.

Rev Frank Onyett commented that the church was closing because: "*people are moving out to the suburbs and the Church must be where the people are.*"

The congregation dispersed to other chapels in the area and it was noted in the *Circuit Bulletin* under Grove Road that: "*With the closing of Dragon Parade Church many of its members are now worshipping with Grove Road. It has been a great joy to welcome them into the fellowship. They bring many gifts to share with us. A large number of children are now attending our Sunday School; we are pleased to have them with us.*"

The Church was demolished and a set of apartments built some years later. The only remains are the boundary wall.

### **Memories of Dragon Parade by Joyce Dobson**

We came to live in Harrogate in 1953 from Scotton, to a large terrace house in Haywra Street. From our front garden we looked across to this beautiful building of Dragon Parade Church.

I joined the Girl Guides and Sunday School. In Sunday School I remember many teachers, Mr Sayers, Mr Stubbens and Mrs Eileen Stubbins who lived in Dragon Avenue and collected children on her way to Church.

The Ministers I remember were Rev Frederick Hunter, Rev Dr. Donald Boyes and Rev Frank Onyett.

The caretakers were Mr and Mrs Fellows and then Mr Tom and Mrs Florence Wylie who lived at the side of the church.

Music was a big part of Dragon Parade. The choir master was Mr. Horace Kay and the organist Mr. George Fowler. Each year there was a performance of The Messiah with guest principals. After Dragon Parade closed in 1967 this moved to Grove Road Church. There were many concerts, Sunday School anniversaries, etc.

In 1958 I was made a member of the Methodist Church and a few years later became a teacher in Sunday School with Mr Allan Peasgood.



I have very happy memories of Dragon Parade. Richard and I were married there in May 1967 just before it closed in the July. So we went to different Churches, some to Grove Road and I joined Richard at Wesley, along with my parents.

Final words should go to Rev Arnold Wigley writing in the *Circuit Bulletin*:

*I believe (d) those buildings... would last until the year 2000 but it was not to be....Be of good heart, Dragon Paraders....The Lord of the Church is the same yesterday, today and forever.*

**Huge thanks to Joyce for supplying her memories alongside copies of articles featuring Dragon Parade that her parents had carefully curated.**

## **Want to know more?**

There are some excellent websites to explore including:

[www.myprimitivemethodists.org.uk](http://www.myprimitivemethodists.org.uk) which provided the photos of Dragon Parade. This site is keen to find photos to go with the locations they have found and any updates on building use people may know of now.

[www.methodistheritage.org.uk](http://www.methodistheritage.org.uk)

Explore the story of Methodism and the chapels and buildings with direct connections with John Wesley.

[www.methodist.org.uk](http://www.methodist.org.uk)

The main website of the Methodist Church with a wealth of resources plus history of how Methodism came to be.

## **Which former chapel would you like to know about for the next issue?**

You may already have connections to chapels such as Hampsthwaite, Oatlands and Grove Road which are no longer active. Please feel free to share your memories and photos with Nicola for next time.



**This magazine was brought to you by:**

Name:

Role:

**Contact Detail:**

Phone –

e-Mail –

If you don't currently have a Pastoral Visitor, but would like one, please get in touch with Rev. Ian Bryon - Telephone 01423 819663